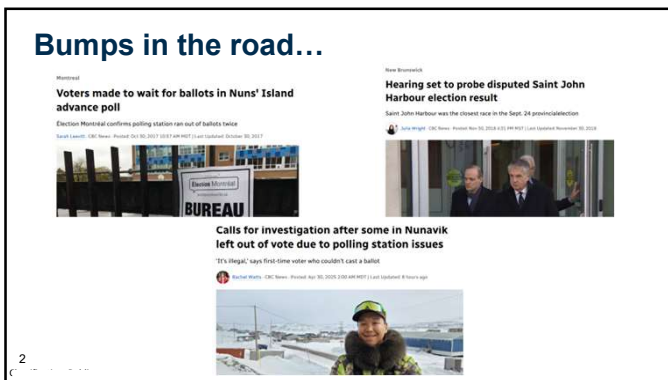




1



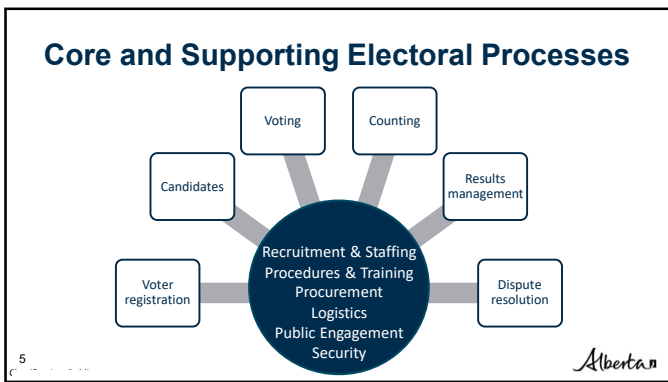
2



3



4



5



6

What are your assumptions?

-
-
-
-
-
-

7 *Alberta*

7

What are your

Objectives

8 *Alberta*

8

MEASURING

SUCCESS

9 *Alberta*

9

Project Risk Management

- Better alignment with objectives
- Improved resource allocation
- Higher stakeholder confidence
- More reliable project delivery
- Reduced surprise factors
- Proactive approach
- Better decision-making

10 *Alberta*

10

IDENTIFYING

11 *Alberta*

11

Risk Register

Number	Risk	Cause	Impact			Mitigation / current controls	Further action required	Lead Officer	Date of completion
			description	Likelihood	Impact				

12 *Alberta*

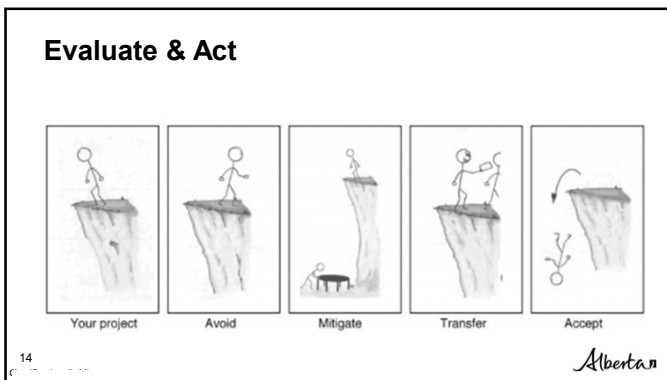
12

Assess Risk & Controls

IMPACT	3 Significant	3 (Significant & Unlikely)	6 (Significant & Possible)	9 (Significant & Probable)
	2 Moderate	2 (Moderate & Unlikely)	4 (Moderate & Possible)	6 (Moderate & Probable)
	1 Minor	1 (Minor & Unlikely)	2 (Minor & Possible)	3 (Minor & Probable)
		1 - Unlikely	2 - Possible	3 - Probable
LIKELIHOOD				

13 *Alberta*

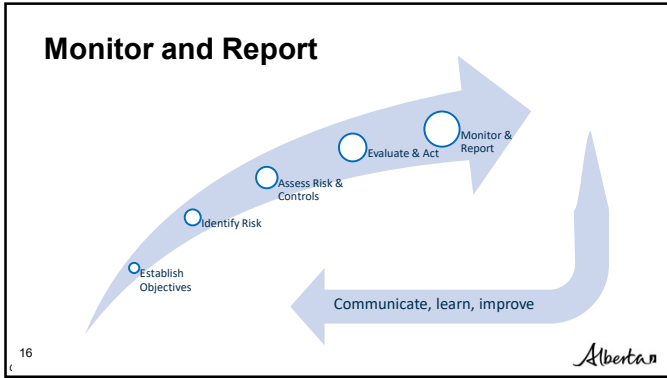
13



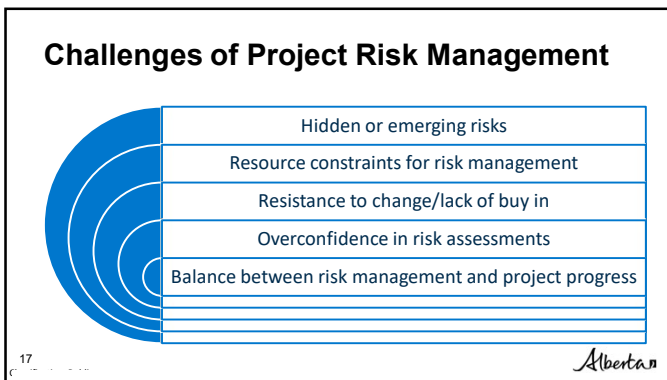
14



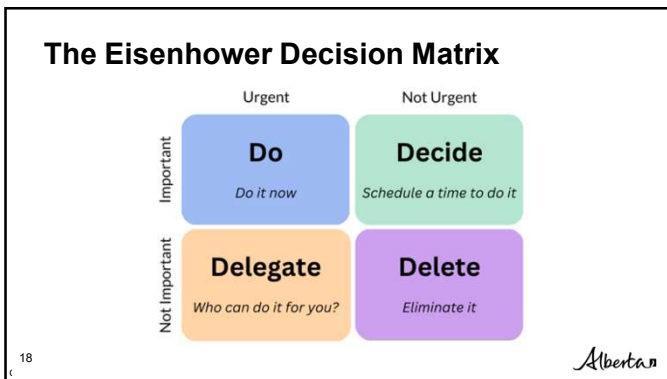
15



16



17



18



19



20

Questions?



Website: www.alberta.ca/municipal-elections-overview
Phone: 780-427-2225 or toll free by dialing 310-0000 first
Email: MA.advisory@gov.ab.ca

Alberta

21
